

# Etablissements CHAPPÉE

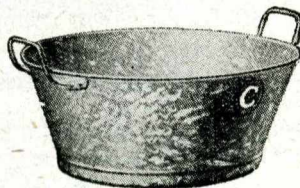
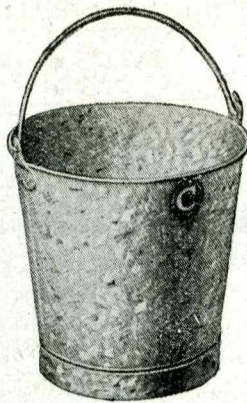
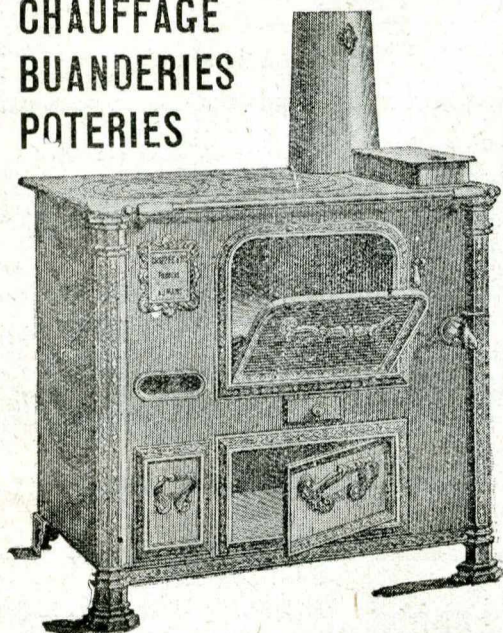
Société Anonyme au Capital de 8 Millions de Francs

USINES à { ANTOIGNÉ par MONTBIROT (Sarthe)  
PORT-BRILLET (Mayenne)  
LE MANS

SIÈGE SOCIAL : LE MANS (Sarthe)

## FONTES DIVERSES

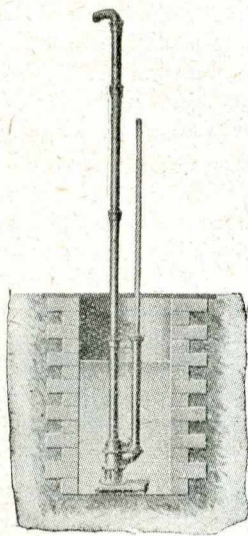
CHAUFFAGE  
BUANDERIES  
POTERIES



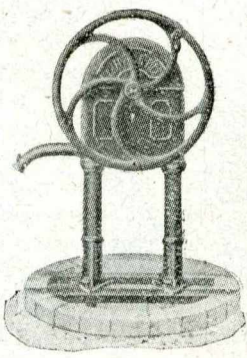
## TÔLERIE NOIRE OU GALVANISÉE



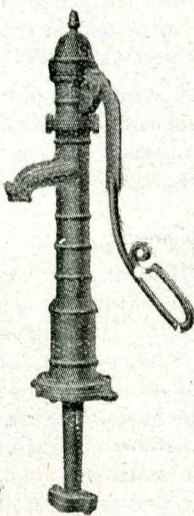
## POMPES



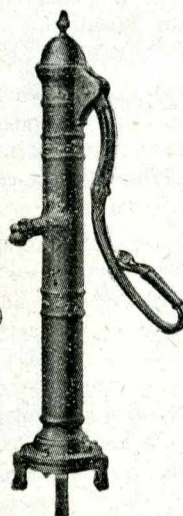
POMPE À PURIN



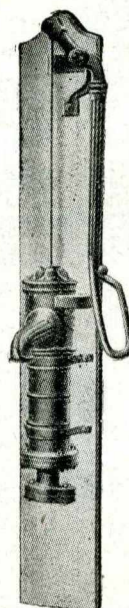
POMPE À CHAPELET  
N° 4



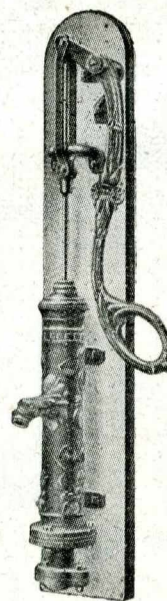
POMPE-BORNE  
DU MANS  
N° 35



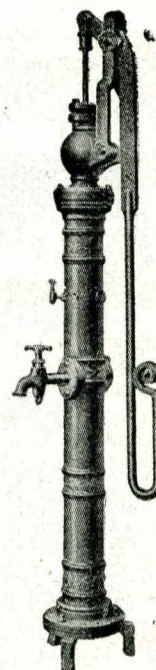
POMPE-BORNE  
À PATIN  
N° 190



POMPE DU MANS  
SUR MADRIER  
N° 29A



POMPE SUR MADRIER  
TIGE GUIDÉE  
N° 17



POMPE-BORNE  
ASPIRANTE ET FOULANTE  
N° 176 bis